

LOCAL BUSINESS
DIRECTORY
INSIDE!

Waterboro Area Guide



Waterboro, Maine

2009-2010

Published Annually by the Waterboro Association of Businesses, Inc.





THERE'S NO PLACE LIKE...

Waterboro.

We are proud to live, work and serve
in the community of Waterboro.



**A BREATH OF
FRESH BANKING**

Sherry Norton, Senior Business Officer • 11 Sokokis Trail, Waterboro, Maine • (207) 247-5500

MEMBER FDIC

gorhamsavingsbank.com

Waterboro

Area Guide

TABLE OF CONTENTS

© 2009 All rights reserved.
All logos and trademarks are property of their respective owners. No part of this publication may be reproduced without written consent from the Publisher. The Waterboro Area Guide is published annually by the Waterboro Association of Businesses, Inc. (WAB) and designed and produced by KL Design & Marketing. For more information about the WAB visit www.waterborochamber.org. Efforts were made in providing accurate information within. If an error or omission was made, we apologize and will do our best to rectify it. We welcome your comments to: info@waterborochamber.org.



*Waterboro Association
of Businesses, Inc.*

PO Box 247
East Waterboro, ME 04030

Welcome Letter	5
2008-2009 Board of Directors	5
Important Numbers	6
About Waterboro	7
Lakes & Ponds	9
Local Events	10
Parks & Recreation.	11
Outdoor Activities & Clubs	13
Hospitals, Airports & Museums	14
Schools & Libraries	15
Transfer Station & Recycling	17
Agricultural Fairs	18
Campgrounds	21
Waterboro Area Map	22-23
Churches	24
WAB membership benefits.	26
Business Membership Directory	27-41
How to join the WAB	42

Pick-Your-Own **APPLES**

MOGFA Certified Organic

Macintosh • Macoun
Hudson's Golden Gem
Cortland • Northern Spy
Zabergau Reinette...

30+ Heirloom Varieties

*Have a picnic with
a view of Ossipee
Mountain or relax
in our cozy loft!*



Coffee Shop & Bakery

Enjoy our own roasted Malabar Coffee!

Espresso • Lattes • Cappucino • Smoothies

Organic handmade breads & bagels

(Anadama, 7 Grain, Honey Whole Wheat)

Homemade muffins, cookies, biscuits, apple cider donuts and more!



Raven Hill Orchard & Farm/Coffeehouse

225 Ossipee Hill Rd., E. Waterboro

207-247-HILL • 1-877-213-1672

Stephen & Jean Eveld, Prop.

Call for business hours or visit

www.Ravenhillorchard.com



Welcome to the Waterboro area!

Waterboro is a beautiful, rural community in Southern Maine just thirty miles from Portland. Our lakes and woods offer lots of activities including snowmobiling, ice fishing, four wheeling, boating, hiking, horseback riding, and some of the best bass fishing around!

The Waterboro area also includes a wide variety of businesses and merchants who pride themselves in providing quality products and services to their local community.

As president of the Waterboro Association of Businesses, I invite you to explore everything this region has to offer. In this second annual *Waterboro Area Guide* you will find helpful community information as well as a directory of our business members which continues to grow. I encourage you to utilize the services of the local businesses that support our community. Together, we can help make the Waterboro area a better place for everyone to live *and* work!

Kerry DeAngelis, President



2008-2009 Board of Directors

Officers are elected annually at the Annual Meeting held in September.

President, Kerry DeAngelis

(207) 206-5639
president@waterborochamber.org

Treasurer, Sherry Norton

(207) 247-5500
snorton@gorhamsavingsbank.com

Vice President, Leo Binette

(207) 247-8440
lsombinette@sacoriver.net

Secretary, Sara Belanger

(207) 929-8009
Sara.Belanger@Bangor.com



L to R: Kerry DeAngelis, Leo Binette, Sherry Norton and Sara Belanger.

Important Numbers

EMERGENCY NUMBERS

Fire/Ambulance 911
 Fire Dept. Non-Emergency . . . 247-5299
 Fire Dept. Fax 247-6259
 State Police 911
 Sheriff 911
 Sheriff Non-Emergency 247-4227

WATERBORO MUNICIPAL OFFICE

Selectmen 247-6166, x221
 Town Administrator . . . 247-6166, x223
 Town Planner 247-6166, x224
 Tax Collector 247-6166, x229
 Town Clerk 247-6166, x227
 Treasurer 247-6166, x226
 Animal Control Officer 459-0369
 Parks & Rec. Director . . 247-6166, x236
 Road Commissioner 247-5178
 Assessor 247-6166, x222
 Building, Plumbing, Code Enforcement
 Officer 247-5346, x234
 Motor Vehicle Agent . . . 247-6166, x228

MUNICIPAL OFFICE BUILDING HOURS

Town Clerk/Tax Collector/Motor Vehicle
 Agent/Code Enforcement Office
 Mon., Wed., Thurs., Fri . . . 9 am - 5 pm
 Tuesday 11 am - 7 pm
Selectmen/Town Administrator
 Mon., Wed., Thurs., Fri . . . 9 am - 5 pm
 Tuesday 11 am - 5 pm
General Assistance by Appointment
 Tuesday & Thursday 1pm - 3 pm

WATERBORO PUBLIC LIBRARY

Telephone 247-3363
 Web Address . . . www.waterborolibrary.org

TRANSFER STATION & RECYCLING

Telephone 247-3440

POST OFFICES

Waterboro (04087) 247-3691
 East Waterboro (04030) 247-4225
 North Waterboro (04061) 793-2358

May 1st - October 1st

Cruise-In

WITH FREE GIVEAWAYS!

Every Friday night
 from 5 to 8 p.m.



Route 5, Waterboro • 247-8005

About Waterboro

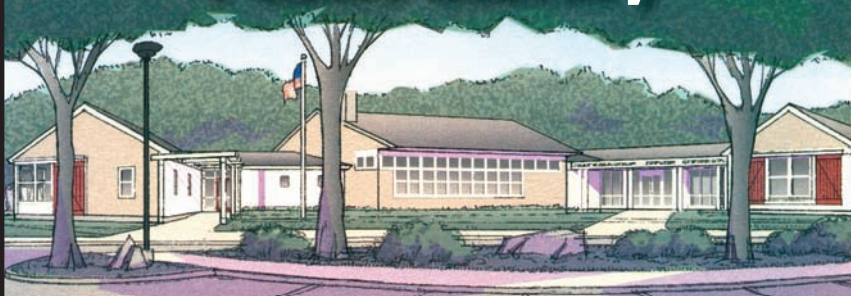
Waterboro is a town in York County, Maine with approximately 7,000 residents. The first permanent settler was Capt. John Smith who came from Kittery in 1768. Originally known as Massabesic Plantation, the Town was incorporated in 1787. Waterboro is currently governed by a town meeting-Board of Selectmen charter. The town includes the villages of North, South and East Waterboro, in addition to the village of Lake Arrowhead, which comprises about one third of Waterboro's population.

Waterboro has a total area of about 57 square miles including 1.8 square miles of water. Its largest body of water is Little Ossipee Lake which covers about 564 acres and its highest point is Ossipee Mountain which reaches 1,058 feet above sea level. Located on the mountain is a fire tower which is listed on the National Historic Lookout Register and controlled by the Waterboro Fire Department.

Waterboro is crossed by U.S. Route 202 and state routes 4 and 5. It borders the towns of Alfred to the southwest, and Lyman to the southeast, Hollis to the northeast, Limerick and Limington to the north, Newfield to the northwest, and Shapleigh to the west. (See map on pages 22-23.)



The NEW Waterboro Public Library



A full-service, state-of-the-art NEW library with expanded collections, adult and children programming, and artistic presentation space.

If you are interested in helping to make our NEW library a REALITY, please contact the Friends of the Waterboro Public Library at 247-3363 (leave a message) or e-mail jseery@sacoriver.net.

Monetary donations can be mailed to: Friends of the Waterboro Public Library, P.O. Box 308, E. Waterboro, ME 04030.



**Locally Owned & Operated
Since 1999**

Deli Sandwiches, Wraps, Salads,
Pizza & Fried Foods
24 Hour Gasoline, Diesel & K1 featuring
"Pay at the Pump"

"Keeping Your Money Local"

Proud Sponsor of Local Community
& Children Based Organizations

**411 Sokokis Trail
Route 5 East Waterboro
247-8440
www.lakesidemarket.net**

Lakes & Ponds

Bartlett Pond

Waterboro & Lyman,
30 acres

Middle Branch Pond

Waterboro & Alfred,
38 acres

Isinglass Pond

Waterboro & Limington,
30 acres

Lone Pond

Waterboro, 8 acres

Lake Arrowhead

(Little Ossipee Flowage)
Waterboro & Limerick,
1,005 acres

Little Ossipee Lake

Waterboro, 564 acres

Moody Pond

Waterboro, 18 acres

Northwest Pond

Waterboro, 38 acres

Pickereel Pond

Limerick, 46 acres

Sokokis Lake

Limerick, 92 acres

Estes Lake

Alfred & Sanford, 387 acres

Shaker Pond

Alfred, 78 acres

Barker Pond

Lyman, 28 acres

Bunganut Lake

Lyman, 325 acres

Kennebunk Pond

Lyman, 224 acres

Roberts Pond

Lyman, 83 acres

Round Pond

Lyman, 6 acres

Swan Pond

Lyman, 147 acres

Wadley Pond

Lyman, 120 acres

Granny Kent Pond

Shapleigh, 70 acres

Little Poverty Pond

Shapleigh, 13 acres

North Shapleigh Pond

Shapleigh, 80 acres



Little Ossipee Lake is stocked with fish regularly by Inland Fisheries & Wildlife.

Adams Pond

Newfield, 210 acres

Mud Pond

Newfield, 9 acres

Poverty Pond

(Silver Lake)

Newfield & Shapleigh,
166 acres

Pinkham Pond

Newfield, 49 acres

Round Pond

Newfield, 3 acres

Turner Pond

Newfield, 32 acres

Smarts Pond

Newfield, 20 acres

Symes Pond

Newfield, 36 acres

Killick Pond

Hollis, 45 acres

Deer Pond

Hollis, 32 acres

Doles Pond

Limington, 25 acres

**For fishing rules
and regulations on
lakes and ponds in
York County, as well
as locator maps,
visit [www.maine.gov/
ifw/laws_rules/fishing/](http://www.maine.gov/ifw/laws_rules/fishing/).**



*"Our customer service and personal attention
are the keys to our success. We never forget that we
and our clients are both part of this community."*

Libby
Libby Rountree
Registered Representative



**SUCCESSFUL
FINANCIAL
MANAGEMENT**

201 Main St. Westbrook, ME 04092

207.854.4600 Toll Free: 866.410.9922

**Insurance - 401k Rollovers - Retirement Planning
Investments - Financial Planning**

Investments and advisory services offered through Lincoln Financial Securities Corporation,
Member SIPC, and is not affiliated with Successful Financial Management

Local Events

23rd Annual Waterboro Old Home Days

Massabesic High School grounds. Fri., July 10-Sat., July 11. Teen Block Party Fri., from 6-10 p.m. Parade Sat. starting at 10 a.m. Cribbage tournament at noon, live music and vendors and crafters. Fireworks Sat. at dusk.

Art in the Barn & English Tea

Annual Art Show/Sale at the Taylor House Museum, Sat. Aug. 15 & Sun., Aug. 16. Meet local artists and see their work on display. English Tea will be served in the Taylor House and on the lawn (weather permitting) Sunday, August 16, sponsored by the Lions Club.

WAB Business Expo & Career Day

Fri., Oct. 23 - Sat., Oct. 24 at Massabesic High School. Career Day on Friday, Expo on Saturday. Sponsored by the Waterboro Association of Businesses. For more information visit www.waterborochamber.org

Haunted Town Hall

Visit Waterboro Town Hall on Friday, Oct. 30 at 6 p.m. for a good scare! Sponsored

by Waterboro Parks & Recreation. For more information call 247-6166, x7.

11th Annual Ice Fishing Derby

on Little Ossipee Lake, Sun., Feb. 14, 2010. Prizes for both adult and children's divisions. Final weigh-in at 3:30 p.m. at Gobeil Park. Sponsored by F.E.T. Inc. and HOFNOD (Hooked on Fishing Not on Drugs) For more information or updates visit www.fetinc.net/

Waterboro Lions Club Bean Supper

Held the 2nd Saturday of each month at the Lions Den (Route 202 in the Lions Medical Center) from 4:30 to 6:30 p.m. Adults \$4.50, Seniors \$4.00, Children 12 and under \$3.50.

Monday Night Bingo

Held every Monday Night at the Lions Den (Route 202 in the Lions Medical Center. Doors open at 5 p.m., Games start at 6 p.m. Intermission around 8 p.m. Air conditioned, Smoke Free, Friendly Atmosphere, Lunch counter, Free lunch give aways, Senior discounts.



Supporting Vision... Building Community

Biddeford Savings is a proud member of the Waterboro Association of Businesses. As a locally-owned mutual bank, Biddeford Savings is pleased to support the people and businesses whose work and vision help to make our communities special.



Biddeford Savings

A whole new equation

207-284-5906

www.biddefordsavings.com

MEMBER FDIC  EQUAL HOUSING LENDER



www.wildcherrywoodworks.com

Fine furniture, cabinetry,
& displays handcrafted in
domestic & exotic hardwoods.

Christopher Dudley
Owner & Craftsman

791 Foss Rd., Limerick, ME 04048

Phone: 207-432-7118

chris@wildcherrywoodworks.com

Parks & Recreation

Waterboro Parks and Recreation takes great pride in its parks and programming. Here is a park list:

FRIENDSHIP PARK: A recreational area located on Old Alfred Road that consists of picnic areas, playground, a little league field, horseshoe pits, beach volleyball, full basketball court, soccer field and lots of space for outdoor activities.

GOBEIL PARK: Located on Route 5 this park includes a roped beach area for swimming in Little Ossipee Lake, picnic areas and a state authorized boat launch. During the winter, ice fishing is a very popular activity there as well.

LIONS' FIELD: Located off Route 202 behind the Massabesic Lions' club, this field hosts adult and youth softball during the summer and pee wee football practice during the fall.

OSSIPEE PINES: Located off Webber Rd., across the lake from Route 5, Ossipee Pines is a scenic park in a natural setting. Trails cut across the lake onto islands that make for very quiet walks and rural beauty.

For a complete list of recreational programs offered by the town, please contact Waterboro Parks & Recreation at (207) 247-6166 x7 or parksandrec@waterboro-me.gov.



ALFRED'S UPHOLSTERY & CO.

Auto • Marine
Convertible Tops
Motorcycle Seats
Furniture Upholster
Custom-made Furniture
Custom Sewing

Contact: Troy Delano • 32 Delano Lane • E. Waterboro
Tel 207.247.2880 • Fax 207.247.2846
alfreds@sacoriver.net • www.alfredsupholstery.com

GRAPHIC DESIGN ADVERTISING • MARKETING



KLDESIGN & MARKETING

**Brochures, Logos, Websites, Signage, Newsletters,
Digital Photography, Photo Retouching and more!**

OVER 20 YEARS OF EXPERIENCE

Call today for a FREE consultation and see how
you can improve your company's image
through strong marketing and communications.

(207) 206-5639

www.kldesignandmarketing.com

Kerry DeAngelis • North Waterboro, ME
E-mail: kerry@kl-designandmarketing.com

Outdoor Activities & Clubs

PINE BARRENS

The Waterboro Pine Barrens is a 2,475 acre Nature Conservancy Preserve located just 25 miles southwest of Portland near Lake Sherburne in Waterboro and Shapleigh. The serene woodland preserve is home to as many as 11 rare species of butterflies and moths that feed on the barrens' vegetation. Trails are located on old wood roads and range from easy to moderately strenuous. Directions: From Waterboro, take West Road 6 miles north to Ross Corner. Turn Right on Newfield Road and continue one mile to Lake Sherburne Road. Turn right and continue 0.8 miles to Bluff Brook Road. Turn left. The parking lot is



The Common Nighthawk is just one of the rare birds you might see nesting in open areas while hiking the Waterboro pine barrens.

on the left at the end of the road. Open dawn to dusk.

ATV CLUB

The Ossipee Mountain ATV'ers ATV club is a family oriented club serving ATV enthusiasts of Alfred, Limerick and Waterboro. The club currently has over 30 miles of riding trails in Waterboro. Business

memberships are \$30 per year, family memberships are \$25 and and associate membership is \$15. For more information visit www.ossipeemountainatv.com.

OSSIPEE MEADOWS GARDEN CLUB

The Ossipee Meadows Garden Club is a group of men and women who share the love of growing things. They work to beautify the community, promote conservation and environmental awareness, and educate themselves and others about gardening, landscape design and good horticultural practices. Their monthly meetings are the 3rd Thursday of the month at Waterboro Town Hall (in the old

building). Doors open at 6:30 p.m., meeting at 7 p.m. and program at 7:30 p.m. For more info call Lisa at 247-6154 or Maggie at 727-5810.

SNOWMOBILE CLUB

The Ossipee Mountaineers Snowmobile Club is a family oriented club nestled in the beautiful lakes and mountains of Waterboro. Club members enjoy monthly potluck dinners, family rides, club trips and more. Membership is open to anyone with annual dues of \$27 due each fall. The clubhouse is located on Old Alfred Road adjacent to Friendship Park. For more information contact TammyJo Girard at 590-7438 or visit www.ossipeemountaineers.com.



Tues. - Fri. 9am-5pm, Sat. 9am-1pm or by appointment,
Closed Sun. & Mon.

961 MAIN STREET, WATERBORO • 247-3333

Hospitals, Airports & Museums

Hospitals:

Bridgton Hospital

(about 42 miles)
10 Hospital Dr., Bridgton, ME
(207) 647-8841

Henrietta D. Goodall Hospital

(about 21 miles)
25 June St., Sanford, ME
(207) 324-4310

Maine Medical Center

(about 22 miles)
22 Bramhall St, Portland, ME
(207) 871-0111

Mercy Hospital

(about 37 miles)
144 State St, Portland, ME
(207) 879-3000

Southern Maine Medical

Center (about 20 miles)
1 Medical Center Drive,
Biddeford, ME
(207) 283-7000

Airports:

Airports certified for carrier operations nearest to Waterboro:

Portland Int'l Jetport (PWM)

(about 29 miles; Portland, ME)
(207) 874-8877

Pease Int'l Tradeport (PSM)

(about 38 miles; Portsmouth)
(603) 433-6088

Other public-use airports nearest to waterboro:

Limington-Harmon (63B)

(about 11 miles; Limington, ME)
207) 637-2121

Sanford Regional (SFM)

(about 16 miles; Sanford, ME)
(207) 432-0596

Biddeford Muni (B19)

(about 21 miles; Biddeford, ME)
(207) 283-0181

Museums:



Waterboro Taylor House Museum

Route 5 & Old Alfred Rd.
Waterboro, (207) 247-4408

Friends of Alfred Shaker Museum

118 Shaker Hill Rd., Alfred,
(207) 324-9630

Willowbrook Museum Village

70 Elm St., Newfield,
(207) 793-2784

Seashore Trolley Museum

195 Log Cabin Rd.,
Kennebunkport, (207) 967-2712

Children's Museum of Maine

142 Free Street, Portland,
(207) 828-1234

The 2010-2011 Waterboro Area Guide
will be published in June 2010.

ROLL-OFF Container Service at the lowest prices!

Prompt Professional Service to Southern Maine & NH



- Roll-Offs 5-100 yard containers
- Scrap Metal Recycling
- Demolition
- Construction Clean-up

M-F 8-5
SAT 9-3

BUYING Junk Cars
All Types of Scrap Metal

C I A Salvage, Inc.

Route 5, Limerick, Maine • www.ciasalvage.com

Toll Free 1-877-456-8608 • 793-8193

Schools & Libraries

MSAD 57 Schools:

Waterboro is part of Maine School Administrative District 57 (MSAD 57), a regional school district which also includes Alfred, Limerick, Lyman, Newfield, and Shapleigh.

WATERBORO ELEMENTARY

340 Sokokis Trail
East Waterboro, ME 04030
(207) 247-6126
http://fc.sad57.k12.me.us/~Waterboro_School/

LINE ELEMENTARY

818 Water Street
West Newfield, ME 04095
(207) 793-4100
http://fc.sad57.k12.me.us/~line_school/

ALFRED ELEMENTARY

21 Sanford Road
Alfred, ME 04002
(207) 324-3831
http://fc.sad57.k12.me.us/~Alfred_School/

LYMAN ELEMENTARY

39 Schoolhouse Rd.
Lyman, Maine 04002
(207) 499-7228
http://fc.sad57.k12.me.us/~lyman_school/

SHAPLEIGH MEMORIAL

467 Shapleigh Corner Rd.
Shapleigh, ME 04076
(207) 636-1751
http://fc.sad57.k12.me.us/~Shapleigh_school/

MASSABESIC MIDDLE

134 Old Alfred Rd.
East Waterboro, ME 04030
(207) 247-6121
http://fc.sad57.k12.me.us/~massabesic_junior_highschool/

MASSABESIC HIGH SCHOOL

88 West Rd., Waterboro, ME
04087, (207) 247-3141
http://fc.sad57.k12.me.us/~Massabesic_HighSchool/

Superintendent of Schools

(207) 247-3221

Transportation Department

(207) 247-6181

Area Libraries:

WATERBORO PUBLIC LIBRARY

187 Main St., East Waterboro
(207) 247-3363

LIMERICK PUBLIC LIBRARY

Washington Street, Limerick
(207) 793-8975

PARSONS MEMORIAL LIBRARY

Kennebunk Road, Alfred
(207) 324-2001

LYMAN/DAYTON LIBRARY

10 John St., Lyman
(207) 499-7114

SHAPLEIGH TOWN LIBRARY

Shapleigh Corner, 636-3630

NEWFIELD PUBLIC LIBRARY

637 Water St., Newfield

DAVIS MEMORIAL LIBRARY

928 Cape Road, Limington
(207) 637-2422

HOLLIS CENTER PUBLIC LIBRARY

Route 35, Hollis
(207) 929-3911



THE HERITAGE CO.
COPPERSMITHS

Four generations of quality craftsmanship.

Specializing in Historic & Architectural Restorations.

247-5372
545 Main Street, Waterboro

SLATE ROOFS • COPPER GUTTERS • COPPER CORNICING



"A small town agency fulfilling life size goals"

Binette
INSURANCE AGENCY

(207) 247-6211

**AUTO • HOME
LIFE • BUSINESS
HEALTH
INVESTMENTS**

We Have Great Motorcycle, ATV, Boat, & Snowmobile Rates!

chris@binetteinsuranceagency.com

Located Across from Lakeside Market

414 Sokokis Trail
East Waterboro, Maine 04030



Ossipee Lake
Mortgage
Solutions

**100% FINANCING
AVAILABLE!**

**ASK US ABOUT
OUR LOW
CLOSING COST!**

**Refinancing &
New Home Purchases**

*We have the lowest rates
in Southern Maine!*

Chris Binette, Owner

(207) 247-2200

Transfer Station & Recycling

WATERBORO TRANSFER STATION & RECYCLING CENTER YEAR ROUND HOURS

Wednesday: 12 noon – 7 p.m.
Friday & Saturday: 9 a.m. – 5 p.m.
Sunday: 1 p.m. – 5 p.m.
CLOSED Monday, Tuesday & Thursday

Located at 132 Bennett Hill Road in East Waterboro, (207) 247-3440. During the hours listed above, the transfer station compactor area, recycling facilities, brush, scrap metal, and compost accumulation area will be open.

Waterboro is a member of ecomaine, a non-profit waste management company located in Portland, which is owned and operated by 21 municipalities in Southern Maine. For more information visit www.ecomaine.org.

RECYCLING INFORMATION

The following items ARE recyclable at the Waterboro Recycling Center:






PLASTICS & GLASS: All plastics # 1-7, grocery bags, milk & water jugs, detergent & bleach bottles, empty oil containers (new), 1/2 gal. milk & juice cartons, other plastic coated cartons, clear & colored glass

METAL CANS, ALUMINUM: Metal food & beverage cans, aluminum foil, aluminum trays & pans, aerosol cans,

PAPER: Mail, catalogs, magazines, newspapers, phone books, paper bags

CARDBOARD: Corrugated cardboard, paperboard, cereal boxes

BOTTLE REDEMPTION is available at Hannaford and JD's Package Store & Redemption, both on Route 5, Waterboro.







Open 7 Days
11am - 9pm

Waterboro HOUSE OF PIZZA

929 Main St., Waterboro

SUNDAY: Large Cheese Pizza	\$ 5.99
MONDAY: Large 1-topping Pizza.	\$ 7.99
TUESDAY: Small Cheese Pizza	\$ 2.39
WEDNESDAY: Large 1-topping & Large Fry. . .	\$ 9.99
EVERYDAY Jumbo Special . . .	\$ 22.99
(2 Large 1-topping Pizzas, 1 Large Fry & 1 2-liter Soda)	

Dine-In or
Take-Out



247-8900 or 247-8910

2009 Agricultural Fairs

Ossipee Valley Fair

July 9-12

www.ossipeevalleyfair.com

Bangor State Fair

July 31 - August 9

www.bangorstatefair.com

Acton Fair

August 27-30

www.actonfair.net

Cornish Fair (Unlicensed)

September 12

This is a horse racing venue with exhibits

Oxford County fair

September 13-19

www.oxfordcountyfair.com

Farmington Fair

September 20-26

207-778-6083

Cumberland Fair

September 27 - October 3

www.cumberlandfair.com

Fryeburg Fair

October 4 - 11

www.fryeburgfair.org

For a complete list of Maine

Agricultural fairs visit:

www.getrealmaine.com/visit/

maine_fairs.html

- Family Salon

- Beauty & Barber Services

- Walk-ins Welcome

- Locally Owned & Operated

The Village Grapevine



207-247-3312

Paulette

221 Main St.

East Waterboro, Me.

04030

"You can get there from here!"

Two Rivers Transport

Almost Always 24 Hour Service

625-7779 • 1-877-524-7779

www.tworiverstaxi.com



"CELEBRATING 10 YEARS IN BUSINESS"

SYLVIE'S CUSTOM PICTURE FRAMING & FINE ART RESTORATION

Fine Art, Photos, Fabric Art, Shadow Boxes

Custom designed and built Artist Floater Frames.

We carry an extensive inventory of Andrew Wyeth Prints.

247-5498 • WWW.SYLVIESFRAMING.COM

49 WEST ROAD, WATERBORO, ME 04087

20% OFF WITH THIS AD! (EXPIRES 12/31/09. EXCLUDES FINE ART RESTORATION)

Good Health - A Family Affair

Massabesic Regional Medical Center, PA
813 Main Street - Waterboro, ME 04087

Craig R. Wallingford, DO, FACOFP

Alex Brazalovich, DO

Melissa Williams, DO

Lisa Keiski, DO

Accepting New Patients

Family Practice • Women's Healthcare
Pediatrics • Sports Medicine • Minor Surgery
Osteopathic Manipulative Medicine
Laboratory Services on site

Tel: 247-6131

Fax: 247-6675

HOURS: Mon. & Fri. 7:30 a.m. - 5:00 p.m.

Tues., Wed. & Thurs. 7:30 a.m. - 6:00 p.m.

~ Part of the Waterboro Community for Over 20 Years! ~



BANK ON THE RUN WITH SIS!

SIS is the local community bank that still provides excellent customer service in conveniently located branches as well as **FREE** access to your accounts, 24/7.

- **ATMs**—Free anywhere with a SIS MasterMoney Debit Card
- **TeleBanker**—Free phone access to your accounts
- **Online Banking**—Bank online with *Free Bill Pay*
- **Mobile Banking**—Use any internet-enabled mobile device to view account history, pay bills or make transfers — check it out today at www.banksis.mobi

**Visit our full-service
branch inside the
Hannaford in Waterboro!**

SIS

The Bank That Listens

SANFORD INSTITUTION FOR SAVINGS

207-324-2285 • 1-888-226-5747

www.banksis.com



MEMBER
FDIC

Campgrounds

ACTON:

Apple Valley Camp-
ground, (207) 636-2285

ALFRED:

Bunganut Lake
Camping Area,
(207) 247-3875
Scott's Cove Camping
Area, (207) 324-6594
Walnut Grove
Campground Inc,
(207) 324-1207

BERWICK:

Beaver Dam Camp-
ground, (207) 698-2267

BIDDEFORD:

Homestead by the River
Family Camping,
(207) 282-6445

EAST LEBANON:

B & B Family Camping,
(207) 339-0150
Heavenlee Acres Camp-
ground, (207) 457-1260

Kings-Queens Court Va-
cation, (207) 339-9465
Natural High
Campground Resort,
(207) 339-0002
Potter's Place Camping,
(207) 457-1341

EAST PARSONFIELD:

Windsong
Campgrounds,
(207) 625-4389

EAST WATERBORO:

Little Ossipee Lake
Campground,
(207) 247-5875

ELIOT:

Indian Rivers Camp-
ground, (207) 748-0844

OLD ORCHARD BEACH:

Guay's Village,
(207) 934-4154
Hidden Pines,
(207) 934-2352

Ne're Beach Tent &
Trailer, (207) 934-7614
Old Orchard Beach
Camping Inc,
(207) 934-4477
Paradise Park Camp
Sites, (207) 934-4633
Pinehirst RV Resort,
(207) 934-5526
Powder Horn Camp-
ground, (207) 934-4733
Virginia Tent Trailer Park,
(207) 934-4791
Wagon Wheel
Camping & Cabins,
(207) 934-2160
Wild Acres Tent & Trailer
Park, (207) 934-2535

SACO:

Cascadia Park,
(207) 282-1666

STEEP FALLS:

Acres of Wildlife
Campground
(207) 675-2267

WELLS:

Beach Area Tent Sites &
Park, (207) 646-5612
Elmere, (207) 646-5538
Gregoire Campground,
(207) 646-3711
Meadowledge RV
Resort, (207) 646-5446
Outdoor World Moody
Beach, (207) 646-4586
Pinederosa Camping,
(207) 646-2492
Riverside Park Camp-
ground, (207) 646-3145
Sea Breeze Motel
& Campground,
(207) 646-4301
Sea Vu, (207) 646-7732
Seawood Camping,
(207) 646-3327
Stadig Mobile Park,
(207) 646-2298
Wells Beach Resort
Campgrounds,
(207) 646-7570

This partial list represents a
random selection of campgrounds
in the Waterboro area.

Lobster Pound
open Memorial Day
to Labor Day!

LANDLOCKED

Lobster & Bait



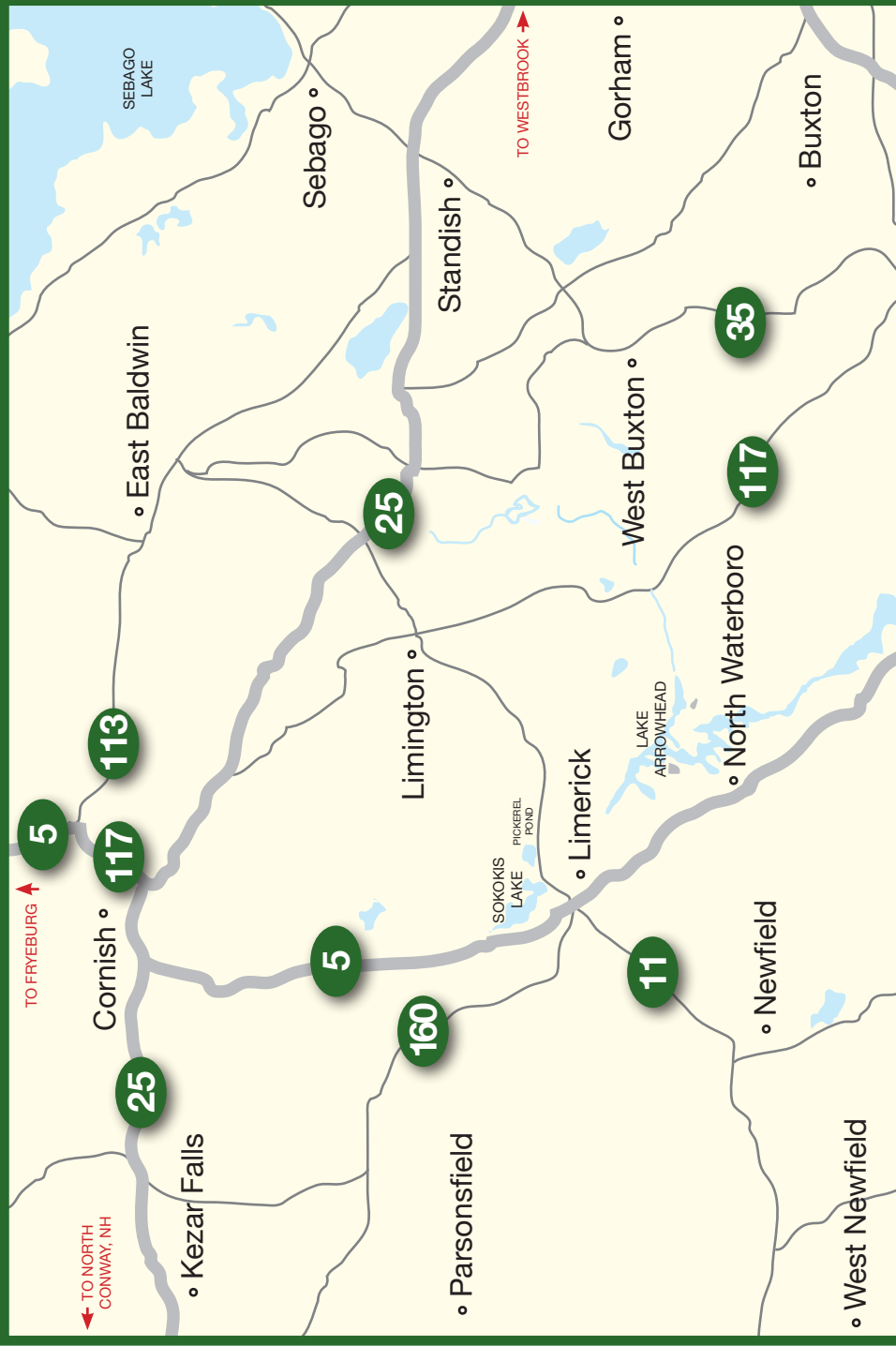


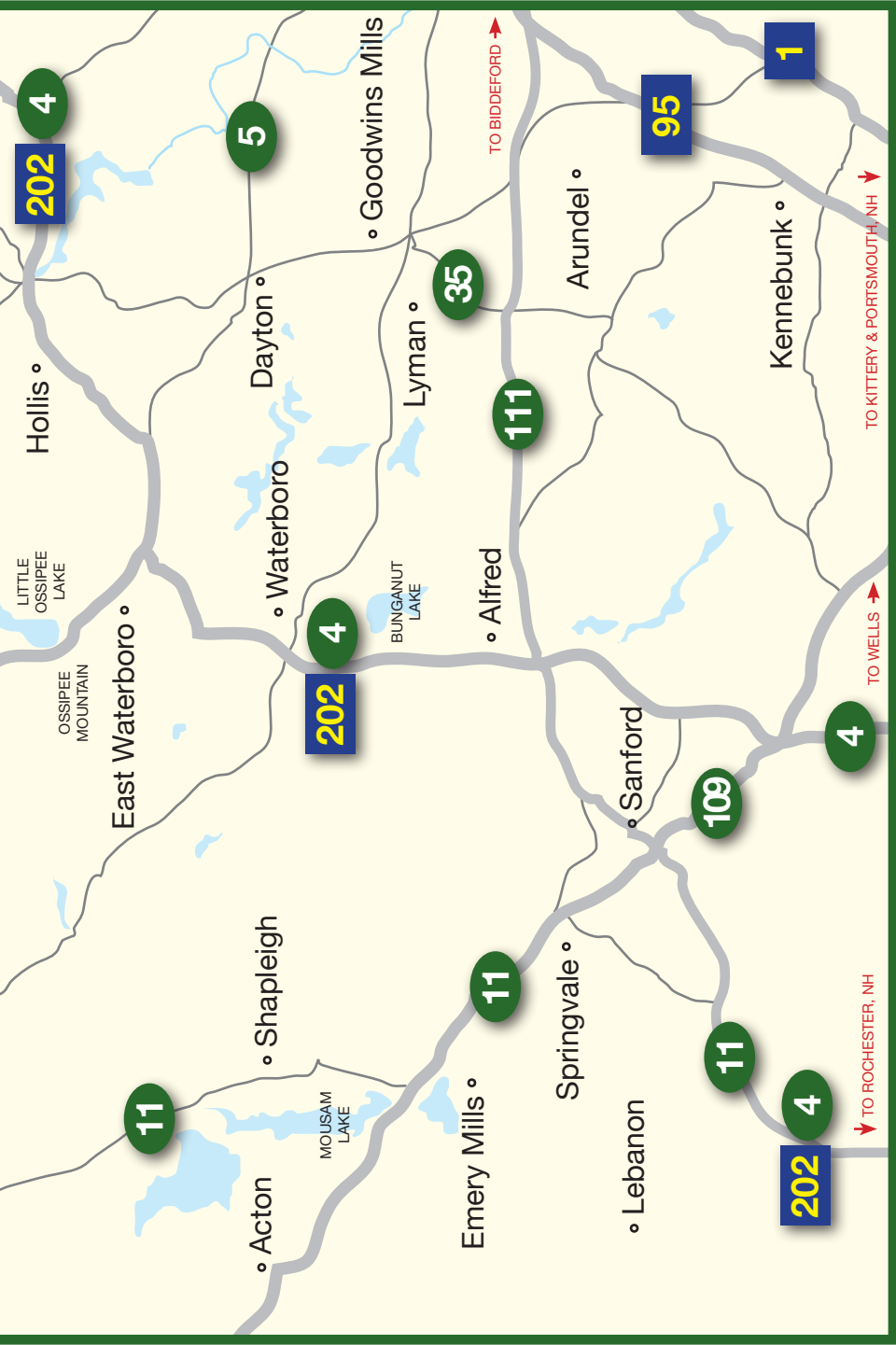
Live Lobsters & Steamed Clams

FREE COOKING!
Call ahead and we'll have
your order ready!

Year Round 24-hour Bait

361 Townhouse Road, East Waterboro • 207-247-5428





Churches

**Grace Family Church
Assembly of God**
1180 Main St.
Waterboro
(207) 247-5618
www.gracefamilychurchag.org

**South Waterboro
Bible Chapel**
911 Main St. (Rte. 202)
Waterboro
swbiblechapel.org
(207) 247-6293

Free Baptist Church
Route 5
East Waterboro
(207) 247-6808

**St Stephen the
Martyr**
424 Sokokis Trail
(Rte. 5)
East Waterboro
(207) 247-6458
www.ststephenwaterboro.org

**Community Baptist
Church**
6 Clarks Bridge Road
North Waterboro
(207) 247-5433

**Lakeside Community
Church**
1248 Sokokis Trail
North Waterboro
(207) 793-9300
www.lcctoday.org/

**Faith Christian
Center**
143 Washington St.
Limerick
(207) 793-8444
www.fcc-church.com

**Limerick Congrega-
tional Church**
43 Main St.
Limerick
(207) 793-8453
www.limerickucc.com

St Matthew's Church
19 Dora Lane, Limerick
(207) 793-2244
www.stmatthewlimerick.org

**Limington
Congregational
Church**
302 Sokokis Avenue
Limington
(207) 637-2061

**Congregational
Church of West
Newfield**
1078 Maplewood Rd.
Newfield
(207) 793-2087
www.westnewfielducc.com

**Merriland Ridge
Memorial United**
Route 11
Newfield
(207) 793-9698

**Hollis Center Baptist
Church**
388 Hollis Road
Hollis Center
(207) 929-4711
www.hcbaptist.com

**Pleasant Hill Baptist
Church**
80 Pleasant Hill Rd
Hollis Center
(207) 727-3566

**United Methodist
Church**
55 Church St
Lyman
(207) 499-7438

Alfred Parish Church
12 Kennebunk Road
Alfred
(207) 324-3841
www.uccwebsites.net

This list represents a random selection of churches in the Waterboro area and may not be complete.



TRUCKING & EXCAVATING

Quality Work at Reasonable Prices

**Loam • Sand • Gravel • Equipment Hauling • Fully Insured
Residential Site Packages • Free Estimates • Septic Systems
Residential & Commercial Snowplowing & Removal • Paving**

ROUTE 202, P.O. BOX 461 • WATERBORO, ME 04087
TIM MCCOY, OWNER • 207-247-5587 • CALL: 229-5768



OSSIPEE MOUNTAIN ATVERS

www.ossipeemountainatvers.com

**Located on ITS-89 on Old Alfred Road
P.O. BOX 131 Waterboro, Maine 04087**



- Prescriptions, fast and accurate service
- Wide selection of over the counter items including All Natural products
- Complete line of medical equipment, pending national certification
- FREE childrens vitamin program
- Delivery available, call for details
- Take back site for unused/unwanted prescription items so they can be safely destroyed and not add to pharmaceutical pollution in the enviroment

Now serving you at two locations!

WATERBORO

10 Goodall Way, Suite 800
East Waterboro, ME 04030

207-247-4000

207-247-4600 (fax)

HOURS: Mon. - Fri. 8am-7pm
Sat. 9am-5pm
Drive-through service

KENNEBUNK

7 Shape Drive Suite 101
Kennebunk, ME 04043

207-985-9400

207-985-9499 (fax)

HOURS: Mon. - Fri. 8am-7pm
Sat. & Sun. 9am-3pm
Curbside service

Locally owned and operated. We support local business & organizations.

www.goodforallpharmacy.com

WAB Membership benefits

- Receive a free business listing at www.waterborochamber.org
- Receive a free WAB window decal promoting your membership
- Receive a free business listing and discounted advertising in the Waterboro Area Guide published annually and distributed by WAB
- Take advantage of membership discounts offered by other business members
- Influence and receive support from other area businesses
- Keep abreast of changes occurring in area businesses and towns
- Be part of an organization that reaches out to their local community and is making a difference
- Receive the financial benefits of joint advertising rates and other advertising opportunities
- Share ideas, thoughts and concerns with other local businesses
- Become part of a valuable local business network that encourages members to utilize each other's services
- Influence the direction of the association
- Share talents by serving on a committee(s) of your choice
- Make new friends!

Fred Fay

James Durgin

Scott Ohman



Septic System Replacement
Residential/Commercial Septic Pumping
Portable Toilet Rentals • Excavation
Leach Fields • Septic Systems

1-800-559-5178

P.O. Box 32 • E. Waterboro, ME 04030 247-5178

MEMBERSHIP DIRECTORY

ART / FRAMING

Kelley Custom Picture Framing
Mark Kelley
305AA Main Street
East Waterboro, ME 04030
(207) 247-2020
www.kelleycustomframing.net

Sylvie's Custom Picture Framing
Sylvie Lemay
49 West Road
Waterboro, ME 04087
(207) 247-5498
www.sylviesframing.com
Sylvie@sacriver.net

AUTOMOTIVE

CIA Salvage, Inc.
Shawn Gerard
366 Sokokis Trail, PO Box 360
Limerick, ME 04048
(207) 793-8193 or (877) 456-8608
Fax: (207) 793-4572
www.ciasalvage.com
info@ciasalvage.com

Jim's Sunoco
James Earl
27 Old Alfred Road
East Waterboro, ME 04030
(207) 247-3600 • Fax: (207) 247-3622
jimssunoco@roadrunner.com



**MASSABESIC
CENTER
FOR
ADULT LEARNING**

Lifelong Learning for You!

84 WEST ROAD
Waterboro ME 04087
207-247-2022
<http://massabesic.maineadulted.org>

**Everything
we do is to help
you succeed.**

**Because we
know you will.**

53 locations around the state
Including: **Hollis, 366 Hollis Rd.,
Hollis Center, ME - 929.8009**

To find other convenient branches
or direct dial for your local branch.
visit — www.bangor.com or call
1.877.Bangor1 (226.4671)

**Bangor
Savings Bank**

You matter more.
Member FDIC



148 Waterboro Rd., Rt. 4/202, Alfred
207-459-5070
Ryan Whitten & David Swett, Owners

Leighton's Garage, LLC

Dana Lewis
1156 Main Street
Waterboro, ME 04087
(207) 247-6301 • Fax: (207) 247-6303
leightonsgarage@yahoo.com

Limerick Transmission

Brad Libby
46 Washington Street
Limerick, ME 04048
(207) 793-2147

BANKS

Bangor Savings

Sara Belanger
366 Hollis Road
Hollis, ME 04042
(207) 929-8009
www.bangor.com
Sara.Belanger@bangor.com

Biddeford Savings Bank

Susan Rocray
PO Box 730
Waterboro, ME 04087
(207) 247-3031
www.biddefordsavings.com
srocray@biddefordsavings.com

Gorham Savings Bank

Sherry Norton, VP/Senior Business Officer
PO Box 410
East Waterboro, ME 04030
(207) 247-5500
www.gorhamsavingsbank.com
snorton@gorhamsavingsbank.com

Saco Valley Credit Union

Debbie Litalien
860 Main Street, PO Box 358
Waterboro, ME 04087
(207) 247-6000 • Fax: (207) 247-2805
www.sacovalley.org
dlitalien@sacovalley.org

Abbott's

Power Equipment

MOTORSPORTS • LAWN & GARDEN • COMMERCIAL

154 Main Street, Route 202, East Waterboro, ME 04030

Tel: (207) 247-5278

Fax: (207) 247-4401

WWW.FMABBOTT.COM



POLARIS
The Way Out.

**Sanford Institution
for Savings**

Debra Harding
PO Box 472, Sanford, ME 04073
(207) 324-2285 or (888) BANK-SIS
www.banksis.com
dharding@banksis.com

BEAUTY / BARBER / SALONS

Mary Kay Cosmetics

Independent Beauty Consultant
Cindy Dumond
58 Lords Lane
North Waterboro, ME 04061
(207) 415-8516
cdumond@marykay.com
www.marykay.com/cdumond

THANK YOU for
supporting our members!

The Salon at the Beehive

Nancy R. Murphy
11 Oak Street, Suite 1
Alfred, ME 04002
(207) 490-7171
nansea516@roadrunner.com

The Village Grapevine

Paulette Davis
221 Main Street
East Waterboro, ME 04030
(207) 247-3312
davis118@yahoo.com

CAMPING

Little Ossipee Lake Campground

David & Maryellen Bozza
440 Sokokis Trail
East Waterboro, ME 04030
(207) 247-5875
www.southernmainecamping.com
mbozza@verizon.net



(207) 637-2776

www.steeplebush.com

102 Staples Rd. (off Rt. 11) • Limington, ME 04049

~ Healthy Potted Herbs ~

Heirloom Perennials • Unusual Annuals

~ Farm Blended ~

*Seasonings • Teas • Dips • Potpourri
Body Care products & more*

~ Gardening Gifts & Necessities ~

Come be surprised by all we have to offer!

OPEN May-Dec.: Tuesday - Saturday 10 - 4;
Sunday 12 - 4 (except July, Aug. & Sept.)

Waterboro Village Pediatrics

"Where compassionate healthcare begins"

43 Sokokis Trail ~ PO Box 454 • East Waterboro, ME 04030

207-247-6742

Ann M. Brooks, MD
Keasha D. Marescot, MD
Maura B. Price, MD
Erin S. Welch, PA-C
www.wvpkids.com



**Accepting
New
Patients**

CLUBS / ORGANIZATIONS

Friends of the Waterboro Public Library

Jack Seery
PO Box 308
East Waterboro, ME 04030
(207) 247-3363
jseery@waterborolibrary.org
www.friendsofwaterboropubliclibrary.org

Ossipee Mountain ATV Club

Todd Abbott
PO Box 131, Waterboro, ME 04087
www.ossipeemountainatvers.com

Ossipee Mountaineers Snowmobile Club

TammyJo Girard
PO Box 273
East Waterboro, ME 04030
(207) 247-3130
www.ossipeemountaineers.com
girardo@adelphia.net

York County Community Action Corp.

Brad Bohon
6 Spruce Street, Sanford, ME 04073
(207) 324-5762 • Fax: (207) 490-5026
www.yccac.org • bradb@yccac.org

CONTRACTORS / EXCAVATING

McCoy Trucking & Excavating

Tim McCoy
Route 202, PO Box 461
Waterboro, ME 04087
(207) 247-5587 • Cell: (207) 229-5768
mccoyexcavating@adelphia.net

CONVENIENCE STORES

Lakeside Market

Leo Binette
PO Box 408
East Waterboro, ME 04030
(207) 247-8440
www.lakesidemarket.net
lakesidemkt@sacoriver.net

Southern Maine Hearing Aids

Hearing Essentials^{Inc.}

Latest digital technology • Repairs, all makes • Batteries
Free in-home hearing screenings and consultations

www.hearing-essentials.com

518 US RT 1, Kittery, ME
(207) 703-0415

545 Main St., Waterboro, ME
(207) 247-6328

Leighton's 24 HR. TOWING AUTOMOTIVE REPAIR 247-6301

247-6301

Computerized Diagnosis
ABS Brakes
Shocks & Struts
Tune-ups
Starters
Alternators
Air Conditioning
Inspections
Exhaust & Battery



Motorhome
Service & Towing
★★★★★

Our customers
have been
putting their
trust in us for
over 20 years.
Make us your
service and
repair specialists!



1156 Main Street, Rte 202, Waterboro

The Milkroom, LLC

Ray & Gerry Pelletier
934 Main Street, PO Box 627
Waterboro, ME 04087
(207) 247-4849

DENTAL SERVICES

Wayne LaRiviere & Assoc.

813B Main Street, PO Box 378
Waterboro, ME 04087
(207) 247-3511 • Fax: (207) 247-3533
drlariviere@sacoriver.net

EDUCATION

Massabesic Center for Adult Learning

Barbara Gauvin, Director
84 West Road
Waterboro, ME 04087
(207) 247-2022 • Fax: (207) 247-6842
www.massabesic.maineadulted.org
Barbara_Gauvin@fc.sad57.k12.me.us

FINANCIAL SERVICES

Ossipee Lake Mortgage Solutions, Inc.

Chris Binette
414 Sokokis Trail (Route 5)
East Waterboro, ME 04030
(207) 247-2200
www.ossipeelakemortgage.com
chris@ossipeelakemortgage.com

Successful Financial Management

Libby Rountree
201 Main Street, Suite 8
Westbrook, ME 04092
(207) 854-4600 or (866) 410-9922
Fax: 207-854-9658
www.successfulfinancialmgmt.com
libbyr@successfulfinancialmgmt.com

**Support YOUR
local businesses by
shopping LOCALLY!**

LIMERICK TRANSMISSION CO.



Local Driveline Solutions

Ask about our 3 year 36,000 mile warranty

46 Washington Street, Limerick, ME 04048

Brad Libby • (207) 793-2147



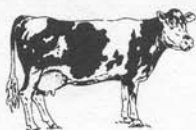
Mark Kelley, Owner

207-247-2020

Kelley Custom **PICTURE FRAMING & ART GALLERY**

"If you want to hang it, I can frame it."

305 AA Main St., E. Waterboro, ME 04030 • www.kelleycustomframing.net



The Milk Room Store
Route 202, South Waterboro

Hours: Sun. through Thurs.: 5:30 A.M. - 10:00 P.M.

Fri. & Sat.: 5:30 A.M. - 11:00 P.M.

Phone: (207) 247-4849

Coffee - Breakfast Sandwiches

Hot and Cold Subs - Fried Foods

Cold drinks - Coolest Beer - Pizza by the slice

Oakhurst Milk - Lottery Tickets: Instant and Megabucks

Inside ATM

Call ahead for the freshest pizza in town

CITGO GAS

Ray & Gerry Pelletier, Owners



MEMBERSHIP DIRECTORY

FLOORING

L&M Floors and More

Peter & Marion McAvoy
961 Main Street, PO Box 761
Waterboro, ME 04087
(207) 247-3333 • Fax: (207) 247-6820
landmfloors@securespeed.us

FUNERAL SERVICES

Dennett, Craig & Pate Funeral Home

Chad Poitras
365 Main St., Saco, ME 04072
(207) 282-0562
13 Portland Rd., Buxton, ME 04093
(207) 929-8200
www.dcpate.com
dcpatefuneral@yahoo.com

GRAPHIC DESIGN / MARKETING

KL Design & Marketing

Kerry DeAngelis
37 Allview Terrace
North Waterboro, ME 04061
(207) 206-5639
www.kldesignandmarketing.com
kerry@kl-designandmarketing.com

HERBS / SPECIALTY STORES

Steeplebush Farm Herbs

Lauriejane Kelley
102 Staples Road
Limington, ME 04049
(207) 637-2776
www.steeplebush.com
herbs@steeplebush.com

Proudly serving our community!



Diane Gray, Broker

Cell: (207) 632-1943
Office: (207) 247-3232
www.dianegray.com



HEALTH SERVICES

Goodall Hospital

Jean Christensen
25 June Street
Sanford, ME 04073
(207) 490-7048
www.goodallhospital.org
jchristensen@goodallhospital.org

Good For All Pharmacy

Angela McGarrigle
10 Goodall Way, Suite 800
PO Box 238
East Waterboro, ME 04030
(207) 247-4000 • Fax: (207) 247-4600
7 Shape Drive, Suite 101
Kennebunk, ME 04043
(207) 985-9400 • Fax: (207) 985-9499
www.goodforallpharmacy.com
customerservice@goodforall
pharmacy.com

Massabesic Regional Medical Center, PA

Pamela Gerry
813 Main Street
Waterboro, ME 04087
(207) 247-6131 • Fax: (207) 247-6675
plynngerry@yahoo.com

Southern Maine Hearing Aids/ Hearing Essentials

Chuck Whittier
545 Main Street, PO Box 28
East Waterboro, ME 04030
(207) 247-6328 • Fax: (207) 247-6388
www.hearingessentials.com
smha.waterboro@rocketmail.com

Waterboro Village Pediatrics

Lynn Legere
43 Sokokis Trail, PO Box 454
East Waterboro, ME 04030
(207) 247-6742 • Fax: (207) 247-6114
www.wvpkids.com
lynn@wvpkids.com

Thank You for Shopping at the
Waterboro Hannaford!

- In Store Pharmacy
- Agency Liquor Store
- Video Rentals & Film Developing
- The Freshest Meat & Produce
- Quality Deli, Bakery & Seafood
- Friendly Customer Service



(207) 247-8000



Jim's Sunoco

Open Mon.-Sat. 8am-6 pm; Closed Sunday

24 Hour Towing

Full Service Garage

247-3600

Whether you live here
or you're just visiting,
everything you want to read,
everything you'd like to do,
everything you ought to see,
is at your fingertips every
Thursday in the **Reporter**.



REPORTER

ALFRED • LIMERICK • LYMAN • NEWFIELD • SHAPLEIGH • WATERBORO

Circulation 12,809 • Volume 7, Issue 13

FREE

Thursday, March 26, 2009

Fiscal fitness

SAD 57 budget would restore 12 ed-tech jobs

By Anne R. Burt

The proposed 2009-2010 school budget for Lyman, 17 school districts, and 12 educational technology jobs were announced last week.

The Lyman School District's proposed 2009-2010 budget, which would restore 12 educational technology jobs, was announced last week.

The Lyman School District's proposed 2009-2010 budget, which would restore 12 educational technology jobs, was announced last week.

Pouring it on

Sunshine lures large crowd on Maple Sunday

By Nancy Blomquist

Maple Sunday was a sunny day in the Lyman area, with a large crowd of people gathered on Maple Sunday.

Maple Sunday was a sunny day in the Lyman area, with a large crowd of people gathered on Maple Sunday.

Maple Sunday was a sunny day in the Lyman area, with a large crowd of people gathered on Maple Sunday.

THIS WEEK

Ed-tech jobs 4-7

Maple Sunday 10-12

Lyman School District 13

Lyman School District 13

Lyman School District 13

A weekend of madness

Page 2

Manabesic students in music festival

Page 22

MAIL: 840 Main Street
Westbrook, ME 04098
PHONE: (207) 854-2577
FAX: (207) 854-0018
NEWS: yorkcounty
@keepmecurrent.com
ADVERTISING: sales
@keepmecurrent.com
www.keepMEcurrent.com

REPORTER
Your Community Newspaper
A Division of Current Publishing



Current Publishing produces six weekly hometown newspapers in Southern Maine
American Journal • Lakes Region Weekly • Current • Reporter • Sun Chronicle • Weekly Observer

MEMBERSHIP DIRECTORY

ICE CREAM STORES

Shaker Pond Ice Cream

David Swett & Ryan Whitten
148 Waterboro Road, PO Box 817
Alfred, ME 04002
(207) 459-5070
www.shakerpondicecream.com
ryan@shakerpondicecream.com

INSURANCE SERVICES

Binette Insurance Agency

Chris Binette
414 Sokokis Trail (Route 5)
East Waterboro, ME 04030
(207) 247-6211 • Fax: (207) 247-8980
www.binetteinsuranceagency.com
chris@binetteinsuranceagency.com

Kasprzak Insurance

Stephen D. Kasprzak
PO Box 23
North Waterboro, ME 04061
(207) 247-4959 or (800) 499-7200
www.kasprzakinsurance.com
steve@kasprzakinsurance.com

LUMBER / BUILDING SUPPLIES

Moulton Lumber

Ed, Carl & Allen Moulton
728 South Hiram Road
Cornish, ME 04020
(207) 625-8045
66 Water Street
West Newfield, ME 04095
(207) 793-2541
www.moultonlumber.com
info@moultonlumber.com

GREAT FOOD. GREAT FUN. GREAT FRIENDS!

May the road rise to meet you and lead you
straight to Sullie's Pub & Grille.

Come enjoy a family friendly,
neighborhood Irish pub.

- Lunch and dinner specials
- Full menu for take-out
- Children's menu
- Entertainment Fri. & Sat.
- Open mic every Sunday 3 - 6

Ask about our special Wine Dinner evenings!



SULLIE'S PUB
& Grille

38 West Road, Waterboro - 207-247-8999
www.sullies.com



Signs ▾ Custom Decals
Vehicle Lettering
Shirts ▾ Hats ▾ Uniforms
Screenprint ▾ Embroidery
Banners ▾ Magnets
Business Cards & Forms

Route 202 ▾ E. Waterboro
247-6430

Proudly Serving Our Customers
Since 1993

MARTIAL ARTS

Ricardo's Family Karate

Professor Frank Ricardo
496 Parsonsfield Road
Limerick, ME 04048
(207) 793-8923
www.ckidsclub.com
escrima@roadrunner.com

NEWSPAPERS

The Reporter (Current Publishing)

Mark Hews
840 Main Street
Westbrook, ME 04092
(207) 854-2577
www.keepmecurrent.com
sales@keepmecurrent.com

ORCHARDS & FARMS

Raven Hill Orchard & Farm/ Coffee House

Stephen & Jean Eveld
255 Ossipee Hill Road
East Waterboro, ME 04030
(207) 247-4455
www.ravenhillorchard.com
stepheneveld@securespeed.us

OIL / GAS / PROPANE

Deer Pond Fuel, Inc.

Helen Hanson
1120 Sokokis Trail, PO Box 41
North Waterboro, ME 04061
(207) 247-3524 or (207) 793-2044
Fax: (207) 793-3677
www.deerpondfuel.com
office@deerpondfuel.com

**If you have information that you would like to be included in next year's
WATERBORO AREA GUIDE, please e-mail it to: info@waterborochamber.org.**

JD'S
PACKAGE STORE
& REDEMPTION
AGENCY LIQUOR STORE



**Largest In-Town Selection of
Beer, Wine, Liquor and Cigarettes!**



PLUS: Yankee
Candles, ATM,
Sports novelty,
phone cards,
candy & more!

OPEN 7 DAYS A WEEK:
Mon.-Thurs. 7am-10pm
Friday 7am-11pm
Saturday 8am-11pm
Sunday 8am-10pm

247-3991

13 Sokokis Trail (Rt. 5), East Waterboro (across from Hannaford)



J.P. Carroll Fuel Co.

Jim Carroll
150 Washington Street
Limerick, ME 04048
(207) 793-2331 or (800) 339-4268
Fax: (207) 793-6648
www.jpccarrollfuel.com
office@jpccarrollfuel.com

PitStop Fuels

Dana Lampron
125 Ossipee Trail East
Standish, ME 04084
(207) 642-8357 or (888) 773-8357
Fax: (207) 642-6709
www.pitstopfuels.com
customerservice@pitstopfuels.com

PACKAGE STORES

J.D.'s Package Store, Inc.

Michael S. Allen
PO Box 328
East Waterboro, ME 04030
(207) 247-3991

PET SERVICES

4LeggedFriendzee

Kirsten Pacyna
1120 Main Street, PO Box 430
Waterboro, ME 04087
(207) 247-DOGS • Fax: (207) 247-3006
www.4leggedfriendzee.com
fourlegged@sacoriver.net

POWER EQUIPMENT

Abbott's Power Equipment

Dave Abbott
154 Main Street, PO Box 330
East Waterboro, ME 04030
(207) 247-5278 • Fax: (207) 247-4401
www.fmabbott.com
fmabbott@sacoriver.net

For an updated membership list,
visit [www.waterborochamber.org/
WAB_members.html](http://www.waterborochamber.org/WAB_members.html)



**KASPRZAK
INSURANCE
ASSOCIATES, INC.**

AUTO • HOME • LIFE • BUSINESS • HEALTH

247-4959 or 800-499-7200

Route 5, North Waterboro • www.kasprzakinsurance.com

DEER POND FUEL

**#2 Heating Oil • Certified K-1
Corinth "Premium Hardwood" Pellets**

24 Hour Emergency Delivery • Automatic Delivery • Master Burner Service • Competitive pricing



207-247-3524 or 207-793-2044



Rte 5 North Waterboro • www.deerpondfuel.com

REAL ESTATE

Agency 1 Real Estate

Diane Gray
397 Sokokis Trail
East Waterboro, ME 04030
(207) 247-3232
www.dianegray.com
Diane.Gray@agency1re.com

Bayley Realty Group

Julie Bayley
925 Main Street
Waterboro, ME 04087
(207) 247-2407 or (866) 216-5489
www.bayleyrealty.com
Julie@BayleyRealty.com

Lake Arrowhead Realty Group

Julie Bayley
1579 Goodwins Mills Road
Waterboro, ME 04030
(207) 247-5400
www.lakearrowheadrealtygroup.com
julieabayley@yahoo.com

RESTAURANTS / FOOD SERVICE

Blast From the Past, Inc.

Linda Morin
114 Sokokis Trail
East Waterboro, ME 04030
(207) 247-8005

One-Ninety-Nine Sokokis Restaurant

Cory Woodsome
199 Sokokis Trail
East Waterboro, ME 04030
(207) 247-6603
www.199sokokis.com
corywoodsomes@yahoo.com

Sullie's Pub & Grille

Jane M. Harriman
38 West Road
Waterboro, ME 04087
(207) 247-8999
Fax: (207) 247-8383
www.sullies.com
info@sullies.com



D&E

Rubbish Removal

247-6935


ROLL OFF CONTAINERS DUMPSTERS

Residential Service in Waterboro only

**Please note:
We now accept**




E-mail: derubbish@waterboro.com



FEEDS & needs

WOODSOME'S FEEDS & NEEDS

Box 387
East Waterboro, ME 04030
(207) 247-5777

Monday thru Friday
9:00 a.m. - 5:00 p.m.

Saturday
8:00 a.m. - 1:00 p.m.

We Deliver!

Waterboro House of Pizza

Jessica & Jason Hill
929 Main Street, PO Box 392
Waterboro, ME 04087
(207) 247-8900
chill2@maine.rr.com

ROOFING & RESTORATION

The Heritage Co.

Victor Wright
545 Main Street, PO Box 71
East Waterboro, ME 04030
(207) 247-5372
heritagecolc@hotmail.com

SECURITY SERVICES

Maine State Security

Chris & Cheryl L'Heureux
98 Company Road, Dayton, ME 04005
(207) 247-4371 • Fax: (207) 929-8484
www.mainestatesecurity.com
info@mainestatesecurity.com

SEPTIC SERVICES

G&F Septic

Fred Fay & Scott Ohman
PO Box 32
East Waterboro, ME 04030
(207) 247-5178 • Fax: (207) 247-5176

SIGNS

RSD Graphics

Todd & Jennifer Abbott
158 Main Street, PO Box 390
East Waterboro, ME 04030
(207) 247-6430
www.rsdgraphicsinc.com
rsdgrafx@sacoriver.net

*Support YOUR
local businesses by
shopping LOCALLY!*



728 S. Hiram Road
Route 25
Cornish, ME
(207) 625-8045

**Our
Locations**

(800) 955-4577

66 Water Street
Route 11
West Newfield, ME
(207) 793-2541

Or visit us online:



www.moultonlumber.com



www.thecabinetfolks.com

MEMBERSHIP DIRECTORY

SUPERMARKETS

Hannaford Bros.

Kathy Riley
20 Sokokis Trail, Waterboro, ME 04087
(207) 247-8000 • www.hannaford.com

TRANSPORTATION

Two Rivers Transport

Dana Gould
4 Central Avenue
Limerick, ME 04048
(207) 625-7779, (877) 524-7779
www.tworiverstaxi.com
needaride@tworiverstaxi.com

For an updated membership list,
visit [www.waterborochamber.org/
WAB_members.html](http://www.waterborochamber.org/WAB_members.html)

UPHOLSTERY

Alfred's Upholstery Co.

Troy Delano
32 Delano Lane
East Waterboro, ME 04030
(207) 247-2880
Fax: (207) 247-2846
alfreds@sacoriver.net
www.alfredsupholstery.com

WOODWORKING

Wild Cherry Woodworks

Christopher Dudley
791 Foss Road
Limerick, ME 04048
(207) 432-7118
chris@wildcherrywoodworks.com
www.wildcherrywoodworks.com

Heating Oil • Certified K-1 • Diesel • Gasoline



PITSTOP FUELS

Competitive Prices...Give Us a Call Today!

24 Hour Emergency Delivery Service

207-642-8357 207-892-2627
1-888-773-8357

www.pitstopfuels.com

Visit Our Convenience Store



125 Ossipee Trail East (Rt. 25), Standish, Maine 04084

HOW TO JOIN THE WAB

[www.waterborochamber.org/
WAB_howtojoin.html](http://www.waterborochamber.org/WAB_howtojoin.html)

Membership is open to all persons over the age of 18 years who are interested in the furtherance of the purposes of the corporation. Each business or organization represented through membership receives the power to vote on major issues.

Membership dues are \$35 per year and are renewable each September. Membership applications are available online or write to: WAB, PO Box 247, East Waterboro, ME 04030. Please make checks payable to: WAB.

**For more information e-mail:
info@waterborochamber.org**

WE CARE ABOUT YOU.

Periodontal disease is a co-factor in stroke and heart attack.
When was the last time you had your teeth cleaned?

CALL TODAY 247-3511

**WAYNE LARIVIERE, D.M.D.
GENERAL DENTISTRY**

MASSABESIC REGIONAL MEDICAL CENTER
813B MAIN ST., ROUTE 202, WATERBORO, ME



SMALL ENOUGH TO CARE - LARGE ENOUGH TO SERVE

MAINE STATE SECURITY

Alarms

FIRE

BURGLARY

207-247-4371

BURGULAR ALARMS

WATER ALARMS

CARD ACCESS

LOW TEMP ALARMS

CARBON MONOXIDE ALARMS

CLOSED-CIRCUIT TV

FIRE ALARMS

INTERCOMS

CELLULAR BACKUP

24 HOUR UL MONITORING

RESIDENTIAL

COMMERCIAL

1-800-273-4371

www.MaineStateSecurity.com

The Waterboro Area Guide is published annually by the Waterboro Association of Businesses as a guide to the area and directory of its local business members. For information about joining the Association, or to learn how you can be part of our 2010-2011 Area Guide, please visit us online at:

www.waterborochamber.org



Our website has up-to-date meeting information, local news and events, and a current list of members.



*Waterboro Association
of Businesses, Inc.*

P.O. Box 247, East Waterboro, ME 04030

E-mail: info@waterborochamber.org • www.waterborochamber.org

York County Community Health Care

Dedicated to enhancing access to quality medical, dental, and mental health services for all people in York County.



**32 Patriot Lane
Sanford, ME 04073
(207) 490 - 6900**

Services for Your Convenience

- Primary Health Care
- General Dentistry
- Mental Health Service—Adults, Children, and Family Therapy

YCCHC accepts MaineCare, Medicare, private insurance, and self-pay. A sliding-scale fee is available for those who meet eligibility requirements.

